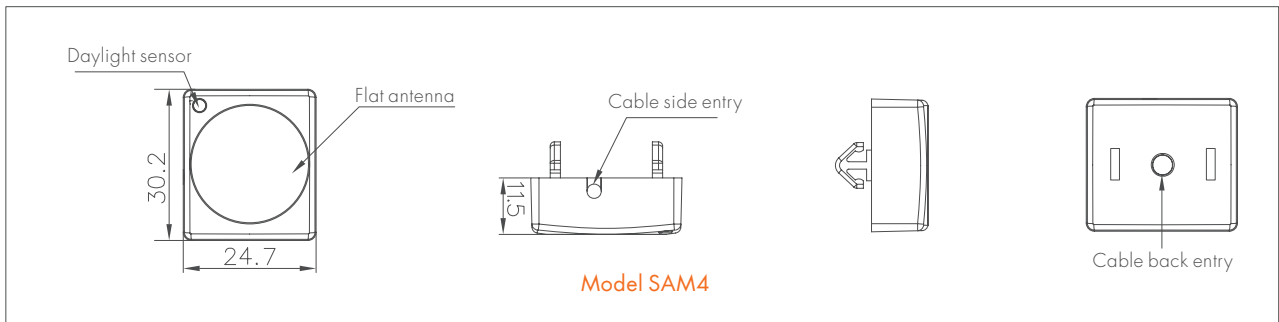
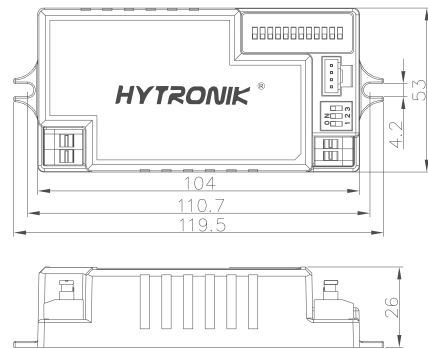
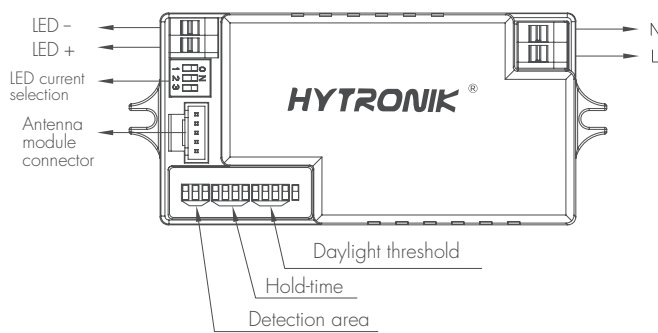
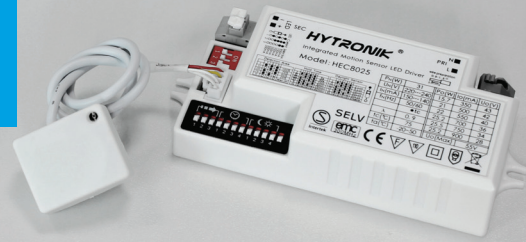
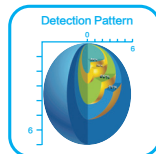
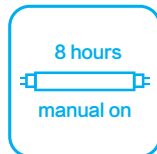


Integrated Motion Sensor LED Driver On/off Control

Model: HEC8025



Super-compact flat sensor antenna, with optional cable entry (side entry and back entry)



Sensor+driver, 2 in 1. Save space, save assembly work, hassle-free and cost effective! This is a smart integration of microwave motion sensor and LED driver with multiple current selections.

Thanks to the detached sensor antenna, it requires very little space on the LED panel, and gives pre-selected constant current to drive the LEDs to work based on movement detection. After the hold time, it switches off the light.

Function and Options

1 Ambient daylight threshold

With simple operation, rapidly turn off/on the fixture 2 cycles within 2 sec:

1. The fixture blinks twice.
2. The daylight sensor measures and remembers the surrounding lux for 1 sec.
3. The fixture is on for 10s to indicate the success of learning.

- * This feature enables the fixture to function well in any real application circumstance, where the daylight penetrated into fixture may vary a lot.
- * The latest surrounding lux value overwrites previous lux value learned.
- * Both the settings on DIP switch and the learned ambient lux threshold can overwrite each other. The latest action stays in validity.

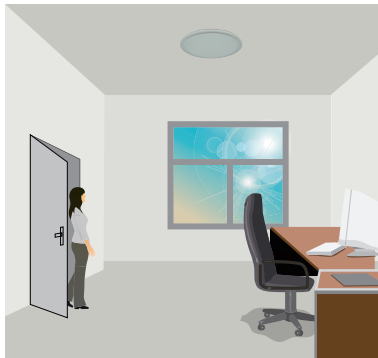
2 8H manual on mode for LED lamp

With simple operation, rapidly turn off/on the fixture 3 cycles within 3 sec. (the green LED on the sensor flashes and the fixture blinks 3 times to indicate the success of setup), lamp will be 100% on for 8 hours, and then automatically goes to sensor mode after 8 hours. Useful when sensor function is not needed in special occasion.

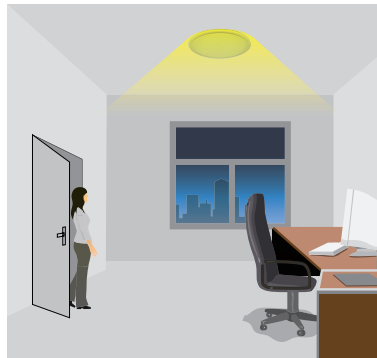
This 8H manual on feature can be cancelled by turning off/on the fixture 1 cycle within 1 sec.

3 On-off Function

This is an integrated motion detection LED driver, it turns on the light on detection of moving objects, and turns off after a pre-selected hold-time when there is no motion detected. A daylight sensor is also built-in to switch off the light when there is sufficient natural light.



With sufficient natural light, the light does not switch on when presence detected.

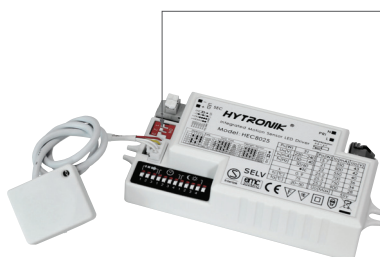


With insufficient natural light, it switches on the light automatically when person enters the room.



After the hold time, it switches off automatically when no movement is detected.

4 LED current selection



I	●	●	●	900mA
II	○	●	●	750mA
III	●	●	○	700mA
IV	○	●	○	550mA
V	●	○	○	500mA
VI	○	○	○	350mA
	1	2	3	Current



The current can be easily configured by choosing the correct combination of the DIP switches (see table on the left).

5 LED Max. load and voltage

This multiple current LED driver has a wide range of loading capacity:

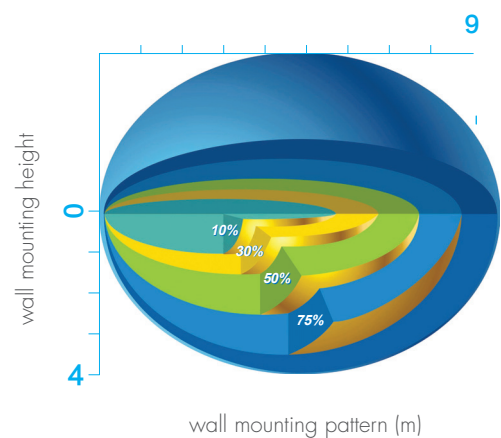
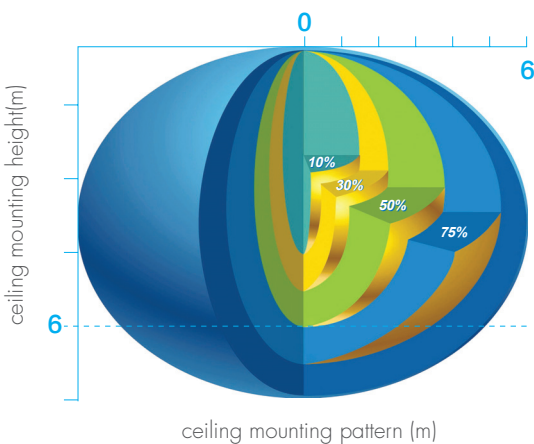
Max. load @ different current

3.5~15W (350mA)	5~21W (500mA)	5.5~22W (550mA)
7~25W (700mA)	7~25W (750mA)	9~25W (900mA)

Max. voltage @ different current

10~43V (350mA)	10~42V (500mA)	10~40V (550mA)
10~36V (700mA)	10~34V (750mA)	10~28V (900mA)

Detection Pattern



Settings

1 Detection area

Detection area can be reduced by selecting the combination on the DIP switches to fit precisely for each specific application.

Note: By choosing "Sensor OFF", it becomes an ordinary driver without sensor mode.

	1	2	3	
I	●	●	●	100%
II	○	●	●	75%
III	●	○	●	50%
IV	●	●	○	25%
V	○	○	○	Sensor OFF

- I – Detection range 100%
- II – Detection range 75%
- III – Detection range 50%
- IV – Detection range 25%
- V – Sensor OFF

2 Hold-time

Hold-time means the time period you would like to keep the lamp on 100% after the person has left the detection area.

	1	2	3	4	
I	●	●	●	●	5s
II	○	●	●	●	30s
III	●	○	●	●	1min
IV	●	●	○	●	5min
V	●	●	●	○	15min
VI	○	○	○	○	30min

- I – 5s
- II – 30s
- III – 1minute
- IV – 5minutes
- V – 15minutes
- VI – 30minutes

3 Daylight sensor

The daylight threshold can be set on DIP switches, to fit for particular application.

"Daylight" : The lamp works always, even during daylight.

"Twilight" : The lamp works only in twilight .

"Darkness" : The lamp works only in darkness.

	1	2	3	4	
I	●	●	●	●	2Lux
II	○	●	●	●	5Lux
III	●	○	●	●	10Lux
IV	●	●	○	●	30Lux
V	●	●	●	○	50Lux
VI	○	○	○	○	Disable

- I – 2 Lux darkness operation only
- II – 5 Lux darkness operation only
- III – 10 Lux twilight operation
- IV – 30 Lux daylight operation
- V – 50 Lux daylight operation
- VI – Photocell disabled

Technical Data

Operating voltage	220~240VAC		
Input current	140~150mA		
Input power	31W (Max.)		
Detection area	Sensor OFF/25/50/75/100%, can be customized		
Hold time	5s/30s/1min/5min/15min/30min, can be customized		
Daylight threshold	2Lux/5Lux/10Lux/30Lux/50Lux /disable, can be customized		
Microwave frequency	5.8GHz+/-75MHz		
Microwave power	<0.2mw		
Detection range	Max. (øxH): 1.2m x 6m		
Detection angle	30°~150°		
Mounting height	Max.6m		
Output LED current	350mA/500mA/550mA/700mA/750mA/900mA		
Output LED voltage	10~43V (350mA)	10~42V (500mA)	10~40V (550mA)
	10~36V (700mA)	10~34V (750mA)	10~28V (900mA)
Output LED power	3.5~15W (350mA)	5~21W (500mA)	5.5~22W (550mA)
	7~25W (700mA)	7~25W (750mA)	9~25W (900mA)
Empty load voltage	55V		
Power factor	≥0.96		
Efficiency	86% (Max.)		
Operating temperature	-20°C ~ +50°C TC:75°C		
Abnormal protection	Output short-circuit protection with auto-reset		
EMC standard	EN55015	EN61547	
Safety standard	EN61347-1	EN61347-2-13	
Certification	Semko, EMC, CE, R&TTE, SAA		
Dielectric strength	Input→output:3750VAC /5mA/1min		
IP rating	IP20		