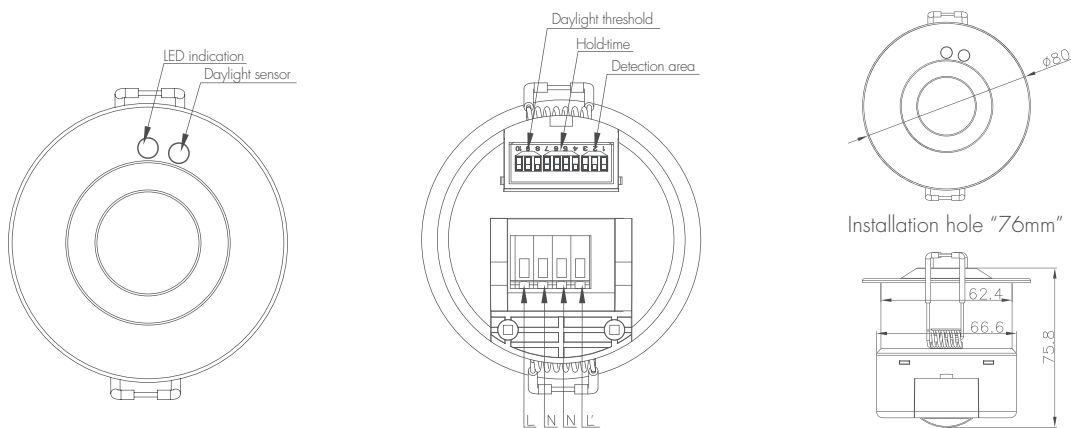
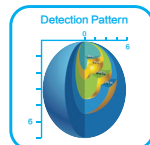
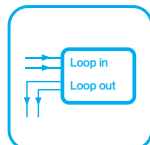


Flush Mounting Installation for Triac Dimmer

Model: HC402S /T



10~100%
Dimming Range



Detection Pattern



Hold-time
5s~30min



2~50Lux

Like it or not, triac dimmer has been there for decades, and will continue to be there for another decade.

To add in motion sensor in the triac dimmer system is a tricky thing. This sensor is particularly designed to fill in that gap. Phase-cut power output from the dimmer goes to the motion sensor first, controlled by the motion sensor, and then supplied to the luminaires.

The benefits of this solution are:

1. Motion sensor switches on/off the luminaire, in the presence/absence of people.
2. Triac dimmer decides the lighting level (1-100%) when motion detected.
3. There is no need to make any additional wiring in the building, just adding the sensor into the master luminaire. Nice, easy and tidy, hassle free. cost effective.
4. 1 sensor can control a group of slave luminaires (without sensor) up to 400W.

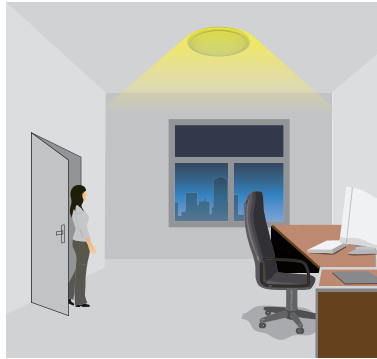
Function and Options

1 On-off Function

This sensor is a motion switch, which turns on the light on detection of people movement, and turns off after a pre-selected holdtime when there is no people around. A daylight sensor is also built-in to switch off the light when there is sufficient natural light.



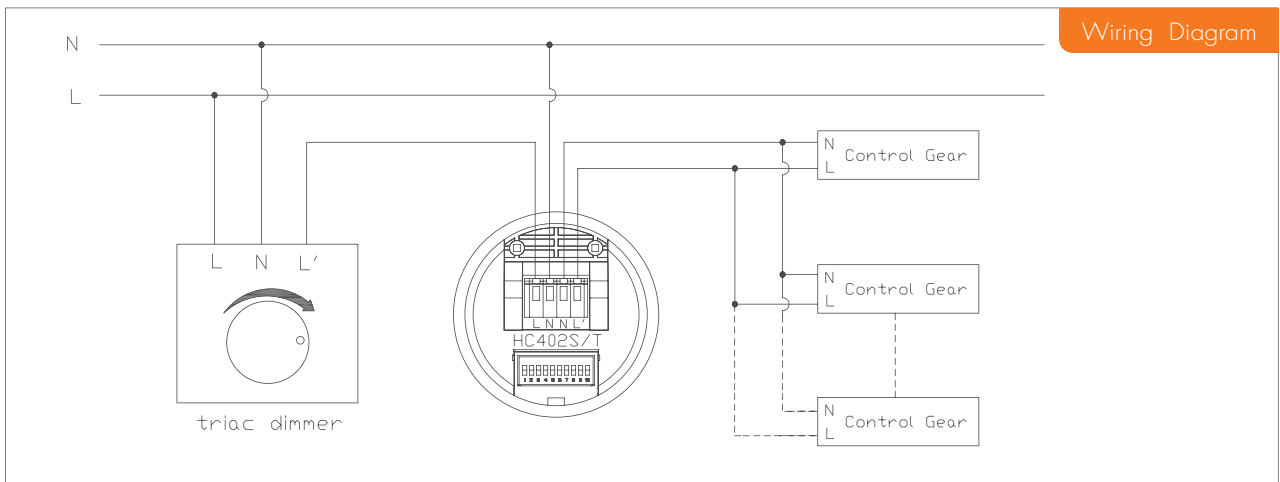
With sufficient natural light, the light does not switch on when presence detected.



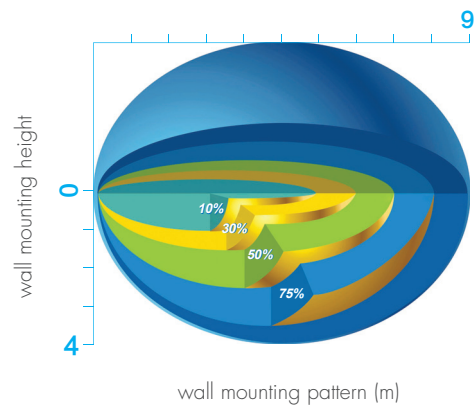
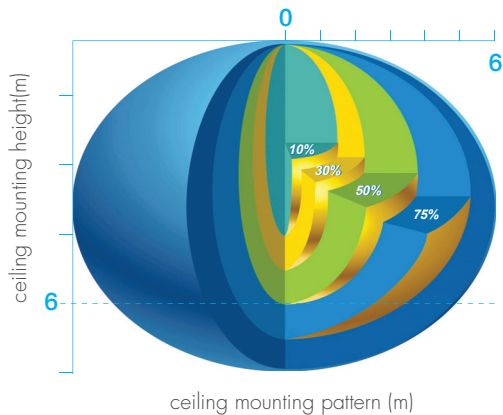
With insufficient natural light, the sensor switches on the light automatically when person enters the room, the lighting level is set by the dimmer.



After the hold time, then switches off automatically when no movement is detected.



Detection Pattern




Settings

1 Detection area

Detection area can be reduced by selecting the combination on the DIP switches to fit precisely for each specific application.

	1	2	3	
I	●	●	●	100%
II	○	●	●	75%
III	●	○	●	50%
IV	●	●	○	25%
V	○	○	○	10%




- I – Detection range 100%
- II – Detection range 75%
- III – Detection range 50%
- IV – Detection range 25%
- V – Detection range 10%

2 Hold-time

Hold-time means the time period you would like to keep the lamp on 100% after the person has left the detection area.

	1	2	3	4	
I	●	●	●	●	5s
II	○	●	●	●	30s
III	●	○	●	●	1min
IV	●	●	○	●	5min
V	●	●	●	○	10min
VI	○	○	○	○	30min



- I – 5s
- II – 30s
- III – 1 minute
- IV – 5 minutes
- V – 10 minutes
- VI – 30minutes

3 Daylight sensor


The daylight threshold can be set on DIP switches, to fit for particular application.

“Daylight” : The lamp works always, even during daylight.

“Twilight” : The lamp works only in twilight and darkness.

“Darkness” : The lamp works only in darkness.

	1	2	3	
I	●	●	●	2 Lux
II	○	●	●	10Lux
III	●	○	●	30Lux
IV	●	●	○	50Lux
V	○	○	○	Disable



- I – 2 Lux darkness operation only
- II – 10 Lux twilight operation
- III – 30 Lux daylight operation
- IV – 50 Lux daylight oper
- V – Photocell disabled

Technical Data

Operating voltage	120-277VAC
Switched power	Resistive load: 1200W; capacitive load: 400W
Standby power	0.5W
Warm time	20s
Detection area	10/25/50/75/100%, can be customized
Hold time	5s/30s/1min/5min/10min/30min, can be customized
Daylight threshold	2~50Lux, disable, can be customized
Sensor principle	Microwave motion detector
Microwave frequency	5.8 GHz+/-75MHz
Microwave power	<0.2mW
Detection range	Max.(∅ x H): 12mX6m
Detection angle	30~150°
Mounting height	Max.6m
Operating temperature	-20°C~60°C
IP rating	IP20 IP65 (mounting in Hytronik special box)
Certificate	EMC, CE, R&TTE, SAA